

<p>B.A.R.N.E.S. EXPLORER SCOUT UNIT</p>	<p>B.A.R.N.E.S. Unit Meeting Times and venues: Second Monday of each month 19:00 - 20:30, Hillside (Knayton) Third Monday of each month 19:30 - 21:00, East Cowton Village Hall Other weeks - See the Unit Programme.</p>	<p>BARNES Unit Leaders Charles C. Marshall [E.S.L.] ☎ 01609 78 12 26 e-mail: ccm@northallerton-scouts.org.uk Richard Shuttleworth [A.E.S.L.] ☎ 01609 77 79 11 e-mail: richard@northallerton-scouts.org.uk Jonny Hopes [A.E.S.L.] ☎ 01609 77 63 40 e-mail: jrh@northallerton-scouts.org.uk</p>
--	---	--

Forthcoming Events and Activities



Yorkshire Dales Cycleway Summer Expedition
27th July - 4th August.

Sponsor forms are now available.



Don't forget that **gliding is booked** for Friday 9th August.

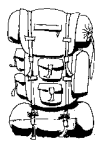


Young Leaders

Modules B, C, and E will run on Saturday 14th September probably in Studley Roger Village Hall.

Modules D, F and I on Saturday 16th November

in Stokesley Scout Hut. Cost £1 for each module.



Expeditions

The current **DofE[B]A / CSPA** team members should now be making sure they have the route plans completed for their qualifying Expedition 7th - 8th September.

The **DofE[S] / CSDA** practice expedition is 26th - 28th October and all being well Qualifying Expedition next April.



The new **DofE[B]A / CSPA** team members will start their expedition related training in September.

Remember that expedition campcraft relates to your Scouting Skills.



Candlemaking Skills

We will start our sessions at the end of the summer. These will be more frequent to start with so we can build up a stock for our stalls.

Northallerton and District Scouts Council AGM

14:00 - 16:30 Saturday 29th June at Northallerton Football Club.

As Explorer Scouts you are part of the District so this is your Annual General Meeting which you and your parents are asked to attend. This year it is combined with an activity afternoon.



Our **Weekend Away** 6th - 8th September will contribute towards your International partnership award.

Everyone will be able to learn a little more about what the India 2014 team will be doing next summer and how the whole Unit can be more involved in the project.

Also on Saturday 7th September we will be serving Afternoon teas in Osmotherley. The current Bronze team will be doing their qualifying expedition the same weekend.



County Challenge

The challenge has been set by the County Commissioner - for the week starting Saturday 5th October, *Do your Scouting in a public place!*

We will start with a **Market Stall in Northallerton** We need a rota of helpers on Saturday 5th October.

The Unit Programme

Following our Unit annual planning meeting 10th June the BARNES ESU programme for 2013-14 is now available (copy attached). Please keep checking the Unit web site for additions/updates as we go through the year.

Many of our activities need to be booked and paid for well in advance. Please return all camp and activity forms with by the dates requested



In addition to the main programme of activities, the India 2014 Team have planned a series of fund-raising events.

Please help promote these by distributing the publicity materials, selling tickets and assisting with these events. These contribute to other awards for everyone.

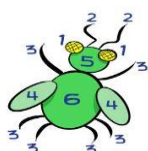
Please ask if you need more copies of the publicity booklet and/or flyers and posters.



Afternoon Teas
Saturday 7th September 2013
in Osmotherley



Craft Stall
Saturday 5th October 2013
Northallerton Market



Pie & Peas and a Beetle drive
Saturday 19th October 2013
at Stokesley Scout Hut.
Tickets £5



Diwali Meal
Saturday 2nd November 2013
at Brompton Methodist Church.
Tickets £12



Soup and Pudding Lunch
Saturday 7th December 2013
at Romanby WI Hall.
Tickets £6



Winter Dinner
Saturday 25th January 2014
at Brompton Methodist Church.
Tickets £12



Northallerton Woodwind Ensemble
Saturday 8th February 2014
at Thirsk Town Hall.
Tickets £7



Marske Fishermen's Choir
Friday 28th March 2014
in Stokesley.
Tickets £7

We are Active Kids 2013



Thank you for collecting Active Kids vouchers.



As part of the programme for this year we will be working on the **Activity Centre Service badge**. The work for this will be based at the Watson Scout Centre.

Recent Activities



Afternoon Tea in the Garden
Saturday 1st June at Tame Bridge
Thank you to everyone who helped to raise a magnificent £410.



DofE[B] / CSPA Expeditions
Practice 8th - 9th June.

A good expedition, let's make the qualifying one even better!

Adult Helpers Required

Our assistant leader and Scout Network helpers are all due to go off to University or other training in September and thus will not be here to help run the Unit. So we can continue to run sessions each week we need some extra helpers.

Parents: please fill in the list of when you could help and perhaps think about becoming a leader or talking friends who may consider helping.

Please keep recycling...



We are still collecting **used postage stamps** for the Alzheimer's Society.





Please keep collecting **milk bottle tops**. They will be passed on to Rotary for "The Yorkshire to Gambia Educational Trust".

www.yorkshiretogambia.org

Subscription Fees

Termly membership fees of £26 for September to December are due on 1st September 2013.

Please pay promptly making your cheque payable to "NDES BARNES".

District Explorer Scout Commissioner	c/o Cath Wight [DC] ☎ 01609 760 331, e-mail: DESC@northallerton-scouts.org.uk
District Explorer Scout Administrator	Charles C. Marshall ☎ 01609 781 226, e-mail: DESA@northallerton-scouts.org.uk
Young Leaders Advisors	 Charles C. Marshall [N.Y. County Scouter.(Y.L.)] ☎ 01609 781 226, e-mail: YLU@northallerton-scouts.org.uk Jim Innerd, Cleveland [E.S.L.(Y.L.)] ☎ 01642 502738, yl-help@northallerton-scouts.org.uk
Archery Instructors	 Mark Hunt, ☎ 01642 504 139, E-mail Archey@northallerton-scouts.org.uk Kevin Scollay ☎ 07917 727 939-e-mail Kevin@northallerton-scouts.org.uk